

Captivating Rhine, Moselle & Main Rivers



TRIP OVERVIEW

Cruise along the mighty Rhine, Moselle and Main rivers on a 7 day All-Inclusive cruise that explores dynamic Frankfurt, the meandering avenues of Koblenz and the famed wine cellars of Rudesheim.

ITINERARY & DETAILS

This document aims to give you all the information that you require for a smooth and comfortable river cruise. Please take the time to read this dossier to familiarise yourself with all the aspects of our river cruise. It includes important information such as visa requirements.

Your included meal guide:

B = Breakfast, L = Lunch, D = Dinner.

DAY 1: UK to Strasbourg via Basel D

Depart London on a scheduled flight to Basel and transfer to Strasbourg. On arrival, greet your crew and enjoy a welcome cocktail before winding through the charming canals of Strasbourg, flanked by vibrant half-timbered houses and bathed in a golden hue..

DAY 2: Strasbourg to Frankfurt on the Rhine B/L/D

An imposing skyline announces your arrival into the dynamic German metropolis of Frankfurt, whose rich cultural heritage is palpable; discover the prominent Frankfurt Cathedral and expansive cobblestoned Romerberg plaza, before returning on board for an evening of entertainment.

DAY 3: Frankfurt to Cochem on the Moselle B/L/D

Following a morning of cruising, arrive in the picturesque town of Cochem, whose hilltop castle is the town's crowning architectural wonder; dominating the scenic landscape and boasting a wonderland of medieval fantasy, enjoy an optional excursion to the imperial 12th century castle this afternoon.

DAY 4: Cochem to Koblenz on the Moselle and the Rhine B/L/D

Continuing along the winding course, reach the confluence of the Rhine and Moselle Rivers and disembark to explore the city of Koblenz. Meander through the quaint courtyards and romantic avenues during an afternoon walking tour one of the oldest cities in Germany.

DAY 5: Koblenz to Rudesheim on the Rhine B/L/D

Arriving this afternoon, traverse scenic vineyards towards Rudesheim's famed wine cellars; savour a selection of regional speciality wines before uncovering an astounding assortment of vintage instruments at Siegfried's Mechanical Music Cabinet.

DAY 6: Rudesheim to Mannheim on the Rhine B/L/D

Sail towards the cosmopolitan city of Heidelberg, where an optional excursion offers the opportunity to witness Heidelberg Castle's lavishly ornamented facade, and the old town's atmospheric market squares and striking baroque architecture. Later this evening, enjoy a gala dinner on board.

DAY 7: Strasbourg to UK B

Disembark after breakfast and transfer to Basel Airport for your return flight to the UK.

Meals

Breakfast, lunch and dinner daily are taken onboard the ship. Tables seat 4 and 6 people, so you'll be able to converse and socialise with new friends, whilst never feeling crowded together. Tea and coffee are available on-board ship as well as unlimited soft drinks and alcoholic drinks, including a variety of wines and beer, both during meals and at the bar. (Premium brands are available at an extra cost). Any dietary requirements and dislikes should be made known to our reservations staff at the time of booking. On embarking the ship, you will be greeted by the captain, crew and staff and treated to welcome cocktails.



SHIP INFORMATION

Ship information:

4★ MS La Boheme:

Located on the Upper and Main Deck, this excellent ship features 80 comfortable cabins, all of which are equipped with en suite facilities, air-conditioning, television, safe and access to Wi-Fi. On board facilities include a sun deck, lounge bar with a dancefloor and a main restaurant.

Available on the following departure dates:

14 Aug 2023
1 Sep 2023
2 Oct 2023

4★ MS Monet:

Offering 78 en-suite cabins which feature modern amenities including air-conditioning, a safe, a television and access to Wi-Fi, this excellent ship boasts superb guest facilities, including a restaurant, lounge bar and sun deck.

Available on the following departure dates:

21 Sep 2023

5★ MS Gérard Schmitter:

With 87 cabins spread over three decks, this welcoming premium vessel provides guests with excellent onboard facilities.

Available on the following departure dates:

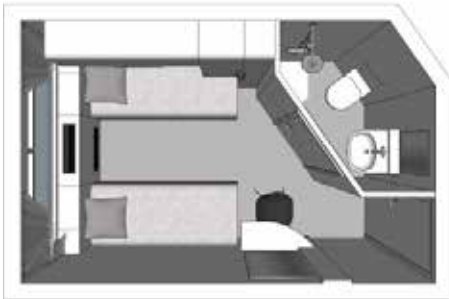
| | | | |
|-------------|-------------|-------------|-------------|
| 28 Apr 2024 | 3 Aug 2024 | 27 Apr 2025 | 02 Aug 2025 |
| 13 May 2024 | 31 Aug 2024 | 12 May 2025 | 30 Aug 2025 |
| 23 May 2024 | 21 Sep 2024 | 22 May 2025 | 20 Sep 2025 |
| 8 Jul 2024 | 6 Oct 2024 | 07 Jul 2025 | 05 Oct 2025 |



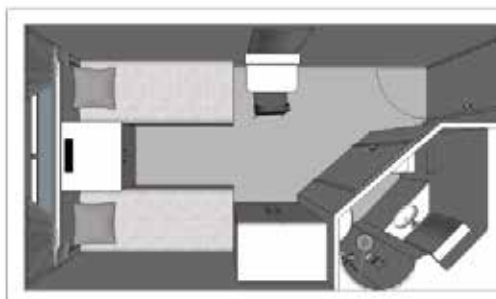
Please note if the ships detailed are not available, alternatives will be used of a similar standard

STANDARD CABIN INFORMATION

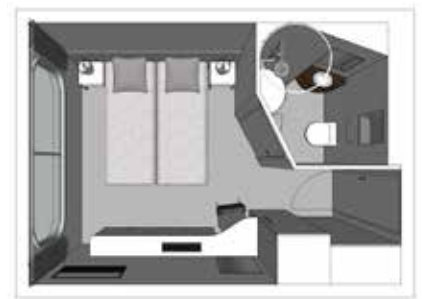
4★ MS La Boheme



4★ MS Monet



5★ MS Gérard Schmitter



ON YOUR ARRIVAL

On your arrival in Strasbourg you will be met by a representative from our local agent, **CroisiEurope**, holding a sign displaying: "Mercury Holidays". The Mercury Holidays/ **CroisiEurope** representative will show you to your transfer vehicle. If you need to contact your representative during your stay the details are:

Emergency contact information

Please find below the **CroisiEurope** emergency contact details:
La Boheme: 06 33 74 64 81
Monet: 07 85 93 96 54

WHAT YOU NEED FOR YOUR TOUR

Visas

A visa is not required for British nationals travelling to France and Germany. Further advice should be sought from the applicable tourist authority for other nationalities and for general queries. We strongly advise you check your destinations' Tourist Board or Embassy for the most up-to-date guidelines regarding passport validity.

Tour Guides

An English-speaking Cruise Director will be on board your cruise to help with any queries that you may have. While on excursions included in your itinerary, you will be accompanied by an English-speaking local tour guide. When exploring locally during your leisure time you will not be accompanied by a tour guide.

Shared cruise

Please note: your cruise is shared with international clients from other companies.

Tipping

Tipping is at your discretion. There is an envelope in your cabin for this purpose that can be handed to reception at the end of your cruise.

Currency Exchange

The currency in France and Germany as well as on board is the Euro (€). We recommend that you exchange your currency before you leave the UK, however cash machines are available in most towns and cities to withdraw money in the local currency.

Personal Expenses

This cruise is All-Inclusive, so you will only need to take a little extra money with you to cover any premium drinks on board and souvenirs, drinks and snacks purchased when off the ship, as well as any optional excursions you wish to book.

Credit Card Information

Credit cards are accepted on board ship and throughout France and Germany.

Electricity Supply

The electricity supply is 220V – 240V.

Itinerary Changes

The Captain and CroisiEurope reserve the right to alter/modify an itinerary at any time, should safety or external circumstances make this necessary, changes are also subject to tides. Some of the highlights may only be seen on optional excursions at an additional cost, or by exploring independently.

Health and Vaccinations

It is your responsibility to check any health and vaccination requirements applicable to your booked arrangements. We can only provide general information about this. Health and hygiene facilities and disease risks vary from country to country. You should take health advice about your own needs as early as possible and in good time before your departure. Sources of information include; www.fco.gov.uk, www.travelhealthpro.org.uk, www.hpa.org.uk, your General Practitioner or a specialist clinic.

Physical Accessibility

This river cruise is accessible to most people with an average level of fitness and normal mobility. It involves moderate days of walking on cobble streets and getting on and off the cruise ship. This cruise is not suitable for anyone with walking difficulties.

Insurance

We strongly recommend that you and all members of your party are suitably insured as soon as you book your holiday. It is a condition of booking that you must have suitable travel insurance. It is important that you purchase travel insurance that suitably covers your participation in whatever activities you may undertake at the time that you make your booking. To assist you with this, we have arranged travel insurance in partnership with Holiday Extras. To arrange your travel insurance with Holiday Extras, please call 0800 781 4237 and quote 'WK830' for preferential rates. Please ensure you provide us with the name of your insurer, policy number and their 24-hour emergency contact number as soon as possible. Mercury Holidays will not be liable for any costs incurred by you due to your failure to take out suitable travel insurance from the date of booking.

Passport Information

Your Passport Information/A scanned copy of your passport is required for this tour. This information is required at least 90 days prior to your departure. Failure to provide this information on time may result in your booking being cancelled with loss of deposit.

WHAT TO PACK

What to Pack

- Comfortable walking shoes such as trainers for sightseeing excursions
- Sun cream and a hat with a big brim for sunny days
- Sunglasses
- Ruck sack or light bag per person

- Personal toiletries
- Insect repellent
- Personal first aid kit containing travel pills, rehydration powder, plasters, stomach settlers, antiseptic creams, aspirin etc.

FLIGHT INFORMATION

IMPORTANT: Please note that final flight details, including terminal, airline and baggage allowance, will be confirmed on your final documentation which will be sent to you approximately 10 days before departure. A printed E-ticket is no longer required at check-in, all you need to do is present your passport to the staff at the desk and your boarding pass will be given to you.

Airport Extras

If you wish to arrange Airport car parking or accommodation at preferential rates, we recommend you book this in advance with Holiday Extras on 0871 360 2000, quoting HX313.

EMBARKING & DISEMBARKING

Embarkation Time: 6pm
Disembarkation Time: 9am

If your arrival is before this time, you will be transferred to the docking area where you will be able to leave your luggage. You are then free to explore the city at your own pace until it is time to board your ship. Please note that details of the boarding quay will be confirmed when you receive your final holiday confirmation.

WEATHER AND CLIMATE

Weather can vary quite considerably throughout the year, so please familiarise yourself with the climate charts below.

